

ARROW™ GHV

Hazardous Location Lighting

The Arrow series Linear, unique hinge-design of driver housing LED, features the industry's most versatile and flexible mounting options. The Arrow is the ideal solution for many hazardous, high vibration, and corrosive environments.

Compliance

NEC/CEC Standard

- UL 844 Hazardous Locations
 - Class I Division 2, Group A, B, C, D
 - Class II Division 1, Group E, F, G
 - Class II Division 2, Group F, G
 - Class III
 - Class I, Zone 2, Group IIC
 - Zone 21, Zone 22

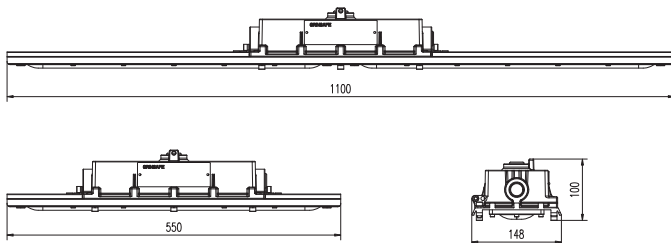
- UL 1598 Wet Locations
- UL 1598A Marine Outside Type (Salt Water)
- UL 8750 LED Safety
- CSA C22.2 No.137-M1981
- CSA C22.2 NO. 250.0

Warranty

- 5-year limited system warranty
- Lumen Maintenance:150,000hours@L70

Dimensions

Dimensions in millimeters (mm)



Technical Data

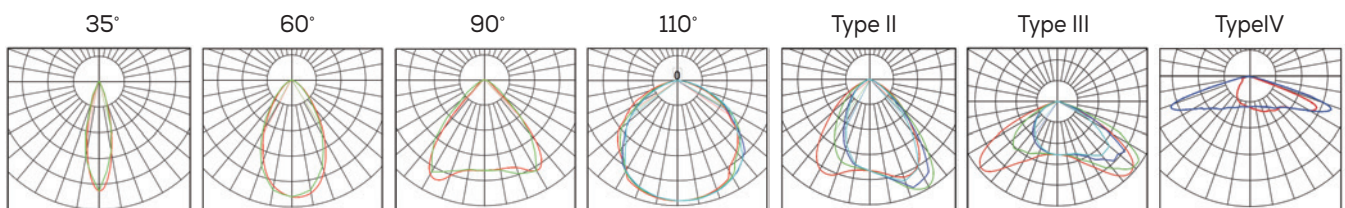
Electric	
Rated Power	30W / 40W / 45W / 60W / 80W
Input Voltage	AC100-277, 347-480V
Input Frequency	50/60Hz
Power Factor	> 0.95
Driver Efficiency	≥ 90%
DC output Ripple & Noise	<200mVP-P

Optical	
Lumen Output	5,100lm ~ 13,600lm
Luminous Efficacy (Lumens per Watt)	170Lm/W
Beam Angle	35° / 60° / 90° / 110° / T2 / T3 / T4
Correlated Color Temperature (CCT)	2700K 3000K 4000K 5000K
CRI	Ra>70

Environmental	
Ambient Operating Temperature	-40°C ~ +70°C
Ambient Operating Humidity	10%~90% RH
Atmospheric pressure	86~106KPa

Technical	
Lens Material	Polycarbonate
Mounting Options	Pendant / Flush / Wall / Stanchion Hanging / Pole Clamp
Cable Entries	3/4" NPT, 1-1/4" NPT, 1-1/2" NPT
Net Weight	5 kg (4 Ft) / 3.2kg (2 Ft)

Beam Distribution



Product design and specifications subject to change without notice.

Ordering Information and Mounting Accessories

GHLV	05	U	2	T4	NW	TPL	PD	GR	XX
Model GHLV		Voltage U - AC100-277V N - AC347-480V			Color Temp WW - 2700K (Warm white) SW - 3000K (Soft white) NW - 4000K (Neutral white) CW - 5000K (Cool white) AJC - Adjustable CCT (3000K/4000K/5000K)		Mount Style PD - Pendant mount (3/4" NPT) FLM - Flush Mount OSM - Offset ceiling / wall Swivel Bracket HM - Hanging Mount PCM - Pole Clamp Mount W90 - Wall mount 90° W25 - Wall mount 25° S90A - Stanchion-90° (1-1/4" NPT) S90B - Stanchion-90° (1-1/2" NPT) S25A - Stanchion-25° (1-1/4" NPT) S25B - Stanchion-25° (1-1/2" NPT)		Accessories FLMK - Flush ceiling mount kit OSMK - Offset ceiling / wall swivel bracket PCMK - Pole clamp mount kit HC - Hanging chain SC2 - Safety cable SP10U - 10KV surge protector (100-277V) *Standard SP10N - 20KV surge protector (347-480V) *Standard SP20U - 20KV surge protector (100-277V) SP20N - 10KV surge protector (347-480V) CAB - 3' SEOOW-18/3 Cord CGL - Cable Gland 3/4" NPT
Power 05 - 5,100 lm (30w) 07 - 6,800 lm (40w) 08 - 7,650 lm (45w) 10 - 10,200 lm (60w) 14 - 13,600 lm (80w)		Ex. Level 2 - C1D2, C2D1			Lens TPL - Transparent PC FPL - Frosted PC				
		Optics 35 - 35° 60 - 60° 90 - 90° 110 - 110° T2 - T2 T3 - T3 T4 - T4					Color GR - Gray		

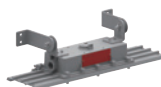
Mounting Options



PD
Pendant Mount
3/4" NPT



FLM
Flush mount



OSM
Offset ceiling / wall
Swivel Bracket



HM
Hanging Mount



PCM
Pole Clamp Mount



W90
Wall mount 90°
3/4" NPT



W25
Wall mount 25°
3/4" NPT



S90A
Stanchion mount 90°
1-1/4"NPT



S25A
Stanchion mount 25°
1-1/4"NPT



S90B
Stanchion mount 90°
1-1/2"NPT



S25B
Stanchion mount 25°
1-1/2"NPT

Accessories



FLM
Flush ceiling mount kit
1 pair



OSM
Offset ceiling / wall
swivel bracket
1 pair



PCM
Pole Clamp Mount Kit
1 pair



CGL
Cable Gland
3/4" NPT
Suitable for C1D2



SC2
Stainless steel
safety cable



HC
Hanging chain
Stainless steel 304
1 pair



10KV Surge Protector
*Standard
SP10U
10KV (100-277V)
SP10N
10KV (347-480V)



20KV Surge Protector
SP20U
20KV (100-277V)
SP20N
20KV (347-480V)



CAB
3' SEOOW-18/3 Cord
(Factory installed)